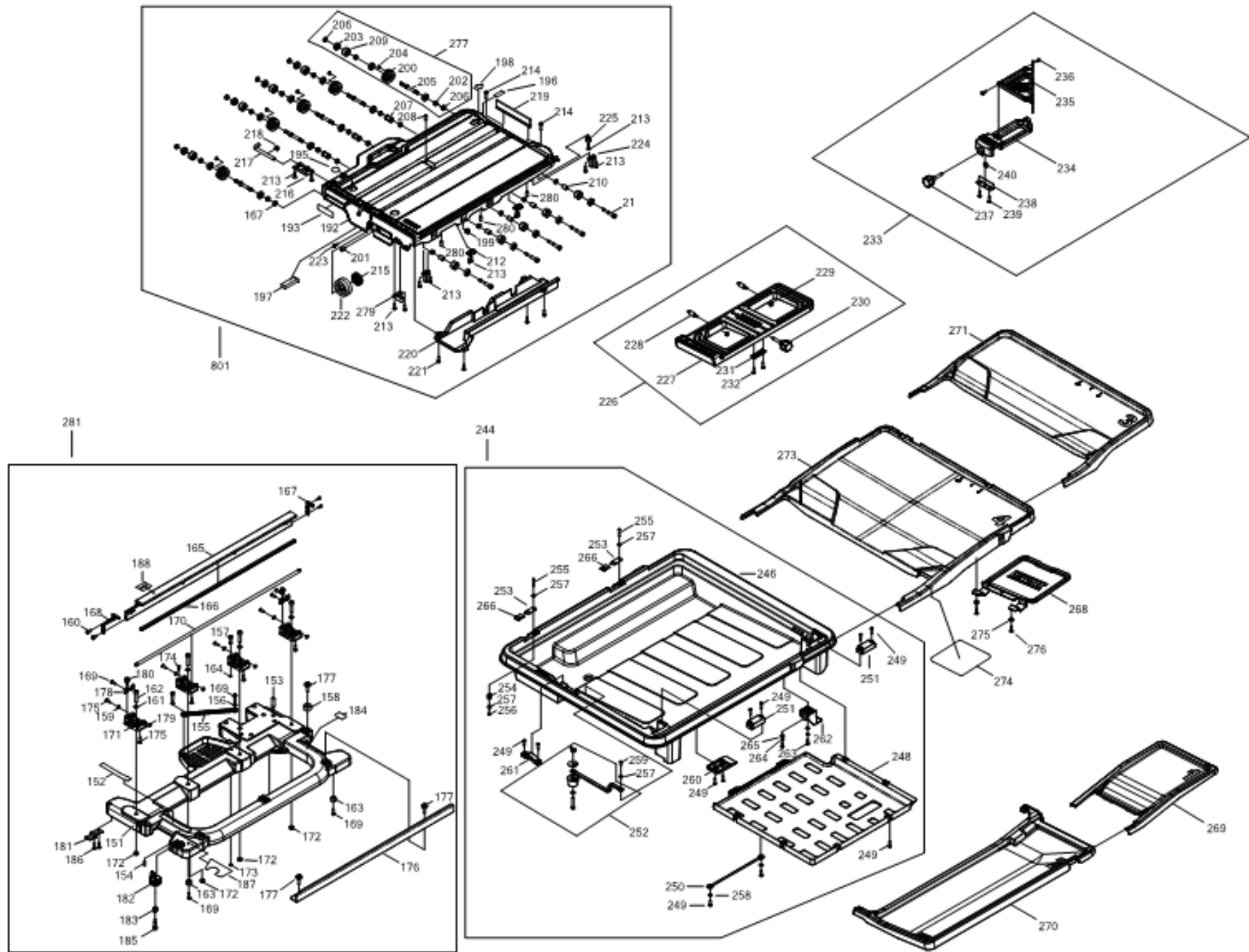




# D36000 Table TILE SAW 1



## Parts List D36000 TILE SAW 1

Item	Part Number	Qty	Part Description	General Description	Other Info	Repair Inst	Markets
1	NA050085	1	RATING LABEL			No	QS
5	N595860	1	FIELD CASE			No	QS
6	N804306	1	FIELD SA		230V	No	QS
7	N854649	1	ARMATURE		230V	No	QS
9	N043347	1	BEARING			No	QS
10	605040-27	1	BEARING			No	QS
11	398605-00	1	RETAINER			No	QS
12	N595864	2	BRUSH BOX LEAD			No	QS
13	N595941	2	BRUSH COVER			No	QS
14	618305-07	2	SCREW			No	QS
15	618303-03	2	SCREW			No	QS
16	609970-00	1	SLEEVE INSULATING			No	QS
17	N854657	2	BRUSH			No	QS
18	N600270	1	CORD PROTECTOR			No	QS
19	N661222	4	SCREW			No	QS
20	612692-00	1	GEARCASE COVER SA			No	QS
21	612661-00	1	COVER GEARCASE			No	QS
22	612695-00	1	SPINDLE			No	QS
23	612696-00	1	GEAR			No	QS
24	612697-00	1	HUB			No	QS
25	605040-41	1	BEARING			No	QS
26	618302-02	16	SCREW			No	QS
27	056122-00	1	O RING			No	QS
28	618302-03	18	SCREW			No	QS
29	627524-00	1	ARM			No	QS
30	330004-06	1	BEARING NEEDLE			No	QS
31	612698-00	1	SPINDLE LOCK			No	QS
32	618568-00	1	FELT SEAL			No	QS
33	398736-00	2	SPRING			No	QS
34	616758-00	1	LOCK BUTTON			No	QS
35	612701-00	1	LINER			No	QS
36	618302-00	14	SCREW			No	QS

## Parts List D36000 TILE SAW 1

Item	Part Number	Qty	Part Description	General Description	Other Info	Repair Inst	Markets
37	N607327	1	END CAP			No	QS
38	618303-01	33	SCREW			No	QS
39	609971-00	1	SLEEVE			No	QS
40	612722-00	1	COVER			No	QS
41	612709-00	4	BUSHING			No	QS
42	618302-11	1	SCREW			No	QS
44	450213-00	2	TERMINAL			No	QS
45	682149-00	1	BUSH			No	QS
47	618303-05	5	PLASTIC SCREW			No	QS
48	N613271	1	NOSE			No	QS
49	N597141	1	MANIFOLD ASSEMBLY			No	QS
50	613462-00	2	NOZZLE			No	QS
51	618353-00	4	O RING			No	QS
52	612773-00	1	PLATE			No	QS
53	618303-00	3	SCREW	M4.55 X 13		No	QS
54	N613269	1	LEVER			No	QS
55	618303-02	1	SCREW			No	QS
56	612728-00	1	RETAINER			No	QS
57	618369-00	5	SCREW			No	QS
58	612776-00	1	FLAP			No	QS
59	618369-01	8	SCREW			No	QS
60	618540-00	8	WASHER			No	QS
61	612778-00	1	REAR FLAP			No	QS
62	618540-01	1	WASHER	SS		No	QS
63	618314-00	1	COVER			No	QS
65	395021-00	1	LABEL			No	QS
67	148608-02	2	INSERT			No	QS
68	618369-02	1	SCREW			No	QS
69	N894610	1	SCREW		BLADE COVER	No	QS
70	619683-00	1	CLAMP			No	QS
70	619683-00	3	CLAMP			No	QS
72	624451-00	1	COVER			No	QS

## Parts List D36000 TILE SAW 1

Item	Part Number	Qty	Part Description	General Description	Other Info	Repair Inst	Markets
76	1007796-00	1	CLIP			No	QS
77	616755-00	1	NUT			No	QS
78	N596516	1	WASHER			No	QS
79	1005935-00	1	WASHER INNER CLAMP			No	QS
80	618302-08	2	SCREW			No	QS
81	612702-00	1	HANDLE			No	QS
82	618069-00	1	KNOB			No	QS
83	623621-00	1	BOLT			No	QS
84	N596848	1	WASHER			No	QS
86	618305-01	1	SCREW	M5 X 5		No	QS
87	612671-00	1	BRACKET	HEIGHT ADJUST		No	QS
88	612717-00	1	PIN			No	QS
89	612709-01	1	BUSHING			No	QS
90	618542-00	1	RETAINER	EXTERNAL RING		No	QS
91	623509-00	1	POINTER			No	QS
92	153460-06	1	SCREW	SEMS		No	QS
93	618133-00	1	LABEL			No	QS
94	013486-00	2	SCREW			No	QS
96	616763-00	1	KNOB			No	QS
97	613365-00	1	WING NUT			No	QS
98	N596532	1	PLATE			No	QS
99	612712-00	1	KNOB			No	QS
101	612669-00	1	TRUNNION			No	QS
102	612708-00	1	PIVOT SHAFT			No	QS
103	612710-00	2	SPACER			No	QS
104	612711-00	1	SPRING			No	QS
106	614031-00	1	PIVOT SHAFT			No	QS
107	618305-00	4	GRUB SCREW			No	QS
108	618305-06	1	SCREW	M8 X 30		No	QS
109	618305-02	1	SCREW	M6 X 16 SS		No	QS
110	612704-00	1	SLEEVE			No	QS
111	612705-00	1	RETAINER			No	QS

## Parts List D36000 TILE SAW 1

Item	Part Number	Qty	Part Description	General Description	Other Info	Repair Inst	Markets
112	612707-00	1	SPACER			No	QS
113	618540-04	3	WASHER			No	QS
113	618540-04	2	WASHER			No	QS
114	618304-00	1	SCREW			No	QS
115	N596892	1	ARM			No	QS
116	616771-00	1	PLATE			No	QS
117	616770-01	3	SCREW	M8 X 1.25 SHOULDER		No	QS
118	618302-06	25	SCREW			No	QS
120	N594385	1	COLUMN			No	QS
121	N765290	1	WARNING LABEL			No	QS
122	N765289	1	WARNING LABEL			No	QS
123	N608508	1	SWITCH			No	QS
124	612784-01	1	PLATE	SWITCH	SWITCH	No	QS
125	612726-01	1	BEZEL		SWITCH	No	QS
126	612727-00	1	ENCLOSURE			No	QS
128	N594389	1	TERMINAL BOX			No	QS
130	605155-00	5	BUSHING			No	QS
131	N887769	1	CABLE SA			No	QS
132	N887580	1	CORDSET			No	QS
133	N914786	1	WIRE			No	QS
135	N689626	1	PLATE			No	QS
136	N638174	1	COVER			No	QS
137	N887990	1	LEAD			No	QS
138	N887991	1	LEAD SA			No	QS
139	393520-00	1	TERMINAL BLOCK			No	QS
140	N594390	1	SUPPORT PLATE			No	QS
141	616769-00	1	SPANNER			No	QS
142	388301-00	3	CLIP			No	QS
144	802214	4	WASHER			No	QS
145	N813578	1	WRENCH			No	QS
146	N663160	2	CLAMP			No	QS
149	612775-00	1	CONNECTOR			No	QS

## Parts List D36000 TILE SAW 1

Item	Part Number	Qty	Part Description	General Description	Other Info	Repair Inst	Markets
152	N765291	1	LABEL		CAUTION	No	QS
153	1006319-00	2	PIN			No	QS
154	N594406	1	PIN			No	QS
155	N612023	1	STRAP			No	QS
157	N596569	1	SCREW			No	QS
158	146753-00	1	BUSHING			No	QS
160	618302-09	4	SCREW			No	QS
161	N688991	4	WASHER			No	QS
162	N689356	4	SCREW			No	QS
163	616767-00	4	FOOT			No	QS
164	N682850	1	WASHER			No	QS
165	612732-00	1	TRACK			No	QS
166	617352-00	1	LINER			No	QS
167	612777-00	1	CAP			No	QS
168	612854-00	1	CAP			No	QS
170	612733-00	1	GUIDE ROD			No	QS
171	N597111	4	BLOCK			No	QS
172	618539-00	12	STOP NUT			No	QS
172	618539-00	4	STOP NUT			No	QS
173	861340-00	1	NUT			No	QS
174	627036-00	1	PLUG			No	QS
175	618304-01	8	SCREW	M6 X 14 SS		No	QS
176	N644604	1	RAIL			No	QS
177	618302-07	3	SCREW	M8 X 12		No	QS
178	612738-00	2	BRACKET			No	QS
179	148608-01	4	INSERT			No	QS
180	612758-00	2	SCREW			No	QS
181	N615835	1	RETAINING PLATE			No	QS
182	N594409	1	STOP			No	QS
183	N594405	1	SPRING			No	QS
185	N650348	1	SCREW			No	QS
187	N770152	1	LABEL			No	QS

## Parts List D36000 TILE SAW 1

Item	Part Number	Qty	Part Description	General Description	Other Info	Repair Inst	Markets
188	N770149	1	LABEL			No	QS
189	616770-00	6	SCREW			No	QS
192	N594407	1	CARRIAGE			No	QS
193	N765288	1	WARNING LABEL			No	QS
195	610707-00	2	WARNING LABEL			No	QS
196	627635-00	1	STRIP			No	QS
197	N811990	1	FOAM			No	QS
198	N780068	1	LABEL			No	QS
199	623086-00	1	INSERT			No	QS
200	612741-00	5	GUIDE			No	QS
201	618302-10	1	SCREW	M5 X 16 SS		No	QS
202	612743-00	10	SPACER			No	QS
203	330003-82	15	BEARING			No	QS
204	618304-07	5	SCREW			No	QS
205	N596540	5	SHAFT			No	QS
207	612746-00	3	CYLINDER			No	QS
208	N660522	1	SCREW			No	QS
209	612742-00	10	ROLLER			No	QS
210	612748-00	5	SPACER			No	QS
211	5170080-20	5	SCREW			No	QS
212	612749-00	2	PLATE			No	QS
213	618302-03	13	SCREW			No	QS
214	618302-00	2	SCREW			No	QS
215	623383-00	1	DISC			No	QS
216	N684569	1	BRACKET			No	QS
217	617230-00	1	ROD			No	QS
218	616785-00	1	SCREW			No	QS
219	612755-00	1	BRUSH			No	QS
220	N632889	1	CHUTE			No	QS
221	618369-01	4	SCREW			No	QS
222	612757-00	1	DISC			No	QS
223	618369-00	1	SCREW			No	QS



## Parts List D36000 TILE SAW 1

Item	Part Number	Qty	Part Description	General Description	Other Info	Repair Inst	Markets
224	N661138	2	PLATE			No	QS
225	N811964	1	BUMPER			No	QS
226	N599255	1	TABLE			No	QS
228	1006975-00	1	PIN			No	QS
230	612716-00	2	KNOB			No	QS
231	622977-00	1	COVER			No	QS
232	618302-01	2	SCREW			No	QS
233	N596595	1	GUIDE			No	QS
235	612761-00	1	GUIDE			No	QS
238	N596554	1	PLATE			No	QS
240	N602517	1	SQUARE			No	QS
241	N764636	1	TUBE			No	QS
242	N775113	1	PUMP SA	230V	230V	No	QS
243	616779-00	1	ADAPTOR			No	QS
244	N644191	1	TRAY			No	QS
246	N644173	1	TRAY			No	QS
248	N603175	1	TRAY			No	QS
250	N825533	1	CORD			No	QS
251	N689213	2	PLATE			No	QS
252	N596581	1	STOP			No	QS
253	622976-00	2	LATCH			No	QS
254	625913-00	2	SPRING			No	QS
255	624727-00	2	PIN			No	QS
256	605365-00	2	RETAINER	CLIP		No	QS
257	618540-03	4	WASHER			No	QS
260	N613577	2	RETAINER			No	QS
261	N607584	1	PLATE			No	QS
262	N811963	1	HOOK			No	QS
263	N840439	2	SCREW			No	QS
264	N843016	2	WASHER			No	QS
265	N843015	2	WASHER			No	QS
268	N811962	1	GUARD			No	QS

## Parts List D36000 TILE SAW 1

Item	Part Number	Qty	Part Description	General Description	Other Info	Repair Inst	Markets
269	N644849	1	TABLE			No	QS
270	N644848	1	TABLE			No	QS
271	N644189	1	TABLE			No	QS
272	152636-01	1	ADAPTOR			No	QS
273	N644188	1	TABLE			No	QS
274	N717693	1	LABEL			No	QS
275	N840489	2	BUSHING			No	QS
277	627857-00	5	ROLLER SA			No	QS
278	N877235	3	SCREW			No	QS
279	612739-00	1	STOP			No	QS
280	330022-08	3	GRUB SCREW			No	QS
281	N594402	1	FRAME SA			No	QS
301	1004784-58	1	IMPELLOR			No	QS
302	1004784-59	1	O RING			No	QS
303	1004784-60	1	REGULATOR			No	QS
304	1004784-61	1	O RING			No	QS
305	1004784-62	1	KNOB SA			No	QS
306	1004784-63	1	SCREEN			No	QS
800	5140061-28	1	GREASE		25G	No	QS
801	N594408	1	CARRIER SA			No	QS